

# WELCOME TO LOMONOSOV MOSCOW STATE UNIVERSITY

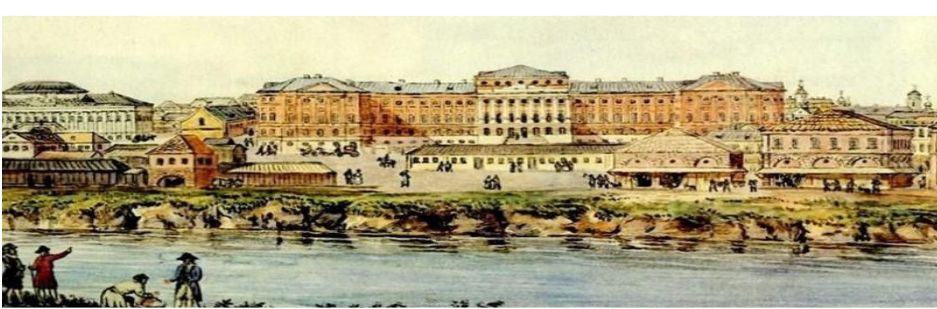


Lomonosov  
Moscow  
State  
University

[www.msu.ru](http://www.msu.ru)



# MSU HISTORY

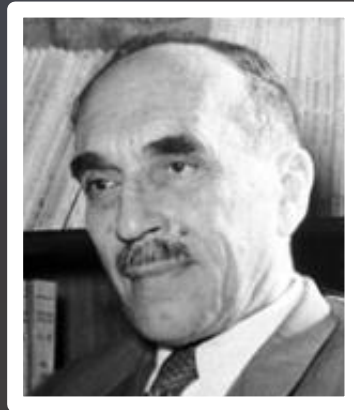


- **January 25, 1755 – establishment of Moscow University with its three Faculties: Philosophy, Law and Medicine.**
- **1940 – naming Moscow State University after Academician Mikhail Lomonosov (1711 - 1765), remarkable scientist and polymath.**
- **1953 – opening of a new campus of Lomonosov Moscow State University at Vorobyevy Gory.**



# NOBEL LAUREATES

**Eleven Nobel Prize laureates graduated from or worked at Lomonosov Moscow State University**



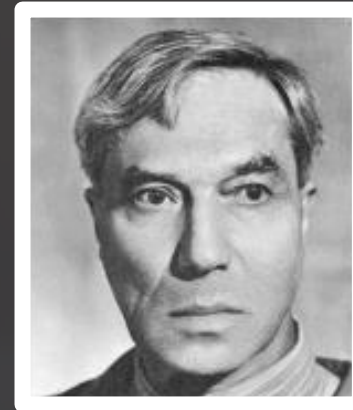
**Nikolay N. Semenov**  
(1956)



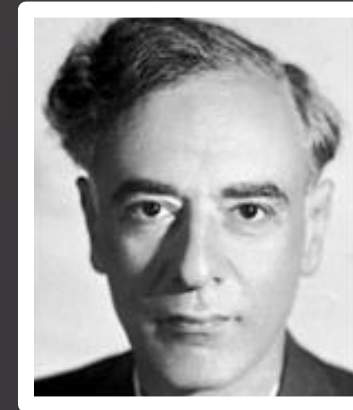
**Igor Y. Tamm**  
(1958)



**Ilya M. Frank**  
(1958)



**Boris L. Pasternak**  
(1958)



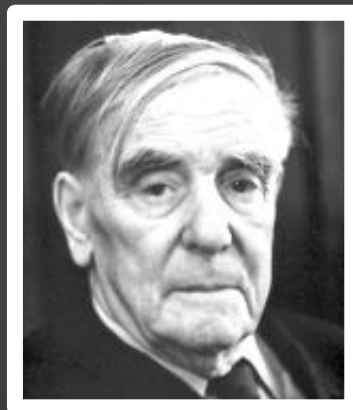
**Lev D. Landau**  
(1962)



**Alexander M. Prokhorov**  
(1957)



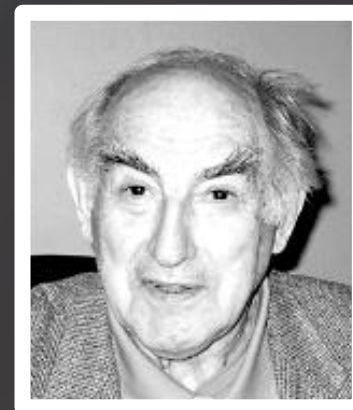
**Andrey D. Sakharov**  
(1975)



**Pyotr L. Kapitsa**  
(1978)



**Mikhail S. Gorbachev**  
(1990)



**Vitaly L. Ginzburg**  
(2003)



**Alexey A. Abrikosov**  
(2003)





# MSU IN FIGURES

- **50,000+** students
- **10,000+** international students from **50+** countries
- **6,000+** candidates of science
- **6,000+** full professors, lecturers and tutors
- **10,000+** staff members

- **41** faculties and schools
- **11** research institutes
- **200** hectares
- **1,000** buildings
- **1,200,000+** m<sup>2</sup> of floor area





# MSU IN RANKINGS

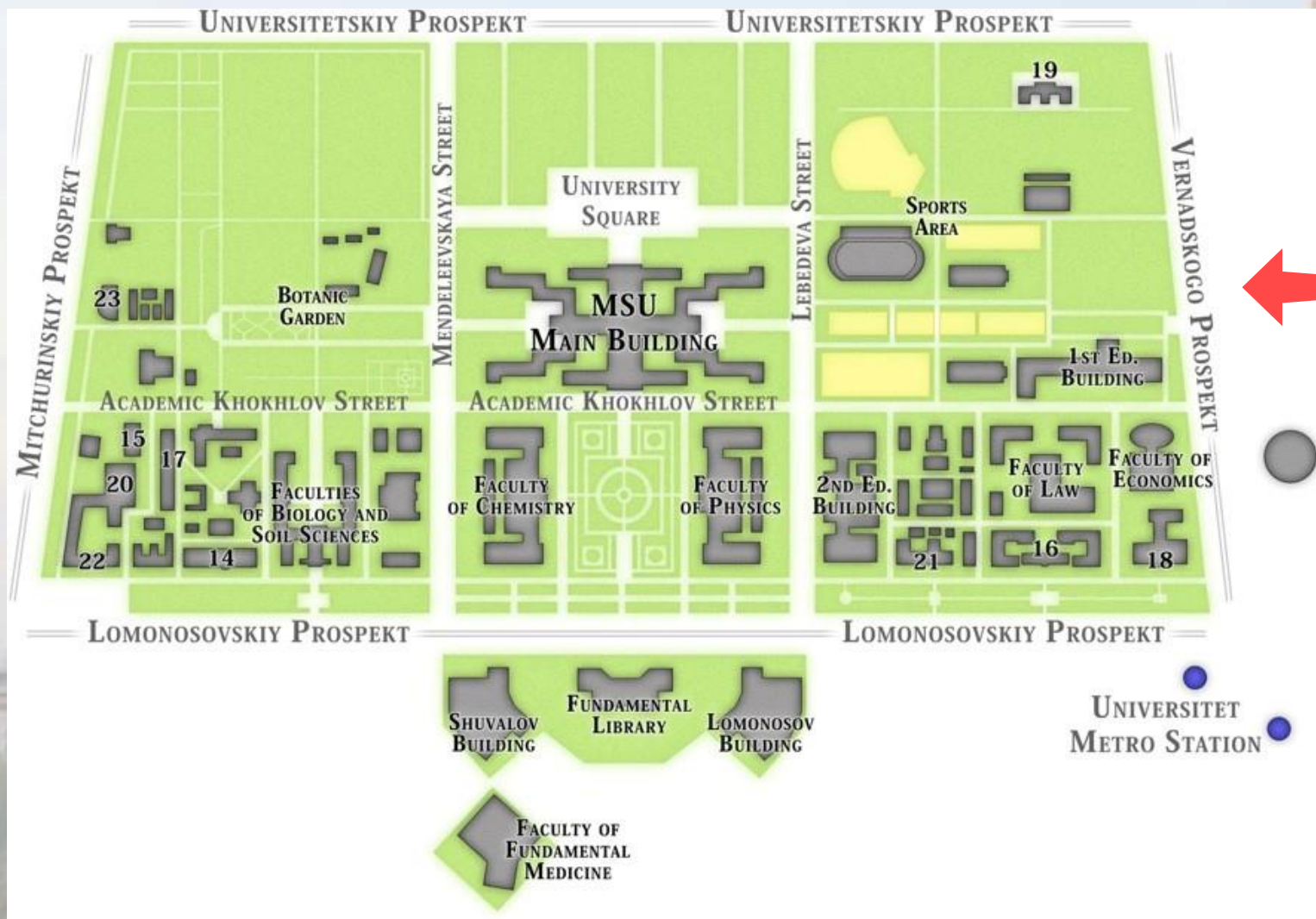


- **1<sup>st</sup>** in Russia in all rankings
- **1<sup>st</sup>** in QS Emerging Europe and Central Asia Rankings 2020
- **21<sup>st</sup>** in Natural Science by QS World University Rankings 2020
- **74<sup>th</sup>** in QS World University Rankings 2021
- **21<sup>st</sup>** in Three University Missions Ranking
- **37<sup>th</sup>** in THE World Reputation Rankings 2020
- **93<sup>th</sup>** in Academic Ranking of World Universities 2020



# MSU CAMPUSES IN MOSCOW

Two campuses in Moscow:  
Vorobyevy Gory and Mokhovaya Street





# MSU FACULTIES

## ❑ FACULTIES OF NATURAL SCIENCES

- Faculty of Mechanics and Mathematics
- Faculty of Computational Mathematics and Cybernetics
- Faculty of Physics
- Faculty of Chemistry
- Faculty of Biology
- Faculty of Soil Science
- Faculty of Geology
- Faculty of Geography
- Faculty of Materials Science
- Faculty of Fundamental Medicine
- Faculty of Bioengineering and Bioinformatics
- Faculty of Fundamental Physical and Chemical Engineering
- Faculty of Biotechnology
- Faculty of Cosmic Research
- Graduate School of Management and Innovation

## ❑ ARTS AND HUMANITIES FACULTIES

- Faculty of History
- Faculty of Philology
- Faculty of Philosophy
- Faculty of Law
- Faculty of Journalism
- Faculty of Psychology
- Institute for Asia and Africa
- Faculty of Foreign Languages and Area Studies
- Graduate School of Public Administration
- Graduate School of Television
- Faculty of Political Science
- Faculty of Arts
- Faculty of World Politics
- Faculty of Global Studies
- School of Translation and Interpretation
- Faculty of Educational Studies

## ❑ SOCIAL SCIENCES FACULTIES

- Faculty of Economics
- Faculty of Sociology
- Graduate School of Public Audit
- School of Contemporary Social Sciences
- Higher School of Policy in Culture and Management in the Sphere of Humanities
- Faculty of Public Administration
- Business School
- Moscow School of Economics
- Graduate School of Innovative Business





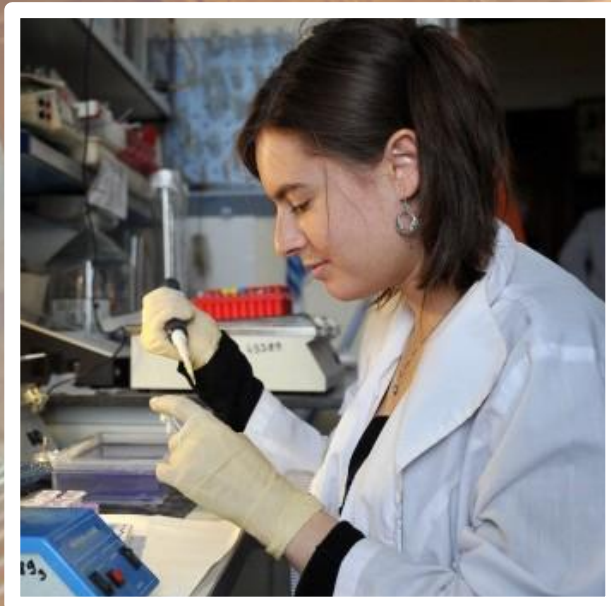
# EDUCATION AT GLANCE



**ALL BRANCHES OF  
MODERN NATURAL SCIENCE,  
ARTS & HUMANITIES, SOCIAL SCIENCE**

**250+ educational programs**

- Balanced combination of fundamental and applied science, tradition and innovation
- Student-teacher ratio – 4:1
- 50+ online courses available at MSU [distance learning platform](#)
- Innovative interdisciplinary Master's programs
- Specializations and in-company experience in such companies as Sberbank, Basic Element, IBM, Yandex, Nestle, Unilever, Big 4 consulting companies, etc.



Lomonosov  
Moscow  
State  
University

[www.msu.ru](http://www.msu.ru)



# MASTER'S PROGRAMS IN ENGLISH

- ✓ MSc "Global Change Ecology and Novel Ecosystems (ecOne)"
- ✓ MSc "Nanobiotechnology"
- ✓ MSc "Project Management in the Field of Decommissioning of Nuclear Facilities (including Radioactive Waste Management)"
- ✓ MSc "Advanced Computing and Networks" (joint program of MSU Faculty of Computational Mathematics and Cybernetics and Skoltech)
- ✓ MSc "International Business Management" (joint program of MSU Faculty of Economics and Jönköping International Business School, Sweden)
- ✓ MSc "International Relations and Global Studies"
- ✓ MSc "Geological-Geophysical Exploration and Modelling of Hydrocarbon Fields"
- ✓ MSc "Post-Soviet Public Policy"
- ✓ MSc "Global Order: Transformations and Challenges"
- ✓ MSc "Economics and Finance" (joint program of MSU Moscow School of Economics and the University of Primorska in MSU affiliated branch in Koper, Slovenia)
- ✓ MSc "Global Economics and Finance" (including preparation for CFA® exams)
- ✓ MSc "Russian Journalism and Culture in a Global Context"





# MASTER'S DOUBLE DEGREE PROGRAMS

- International Business Management
- Public and Municipal Administration
- International Business and Strategy
- Political Studies
- International Economic Law
- International Finances
- Russia and France: a Cross View
- Philosophy
- History of the Belarusian Diaspora



## PARTNER UNIVERSITIES

- Jönköping International Business School (Sweden)
- George Mason University (USA)
- University of St. Andrews (UK)
- University of Reading (UK)
- Gumilev Eurasian National University (Kazakhstan)
- University of Primorska (Slovenia)
- Sorbonne University (France)
- Belarusian State University (Belarus)





# MSU CAMPUSES OVERSEAS



**SEVASTOPOL (RUSSIA)**



**BAKU (AZERBAIJAN)**



**YEREVAN (ARMENIA)**



**KOPER (SLOVENIA)**



**TASHKENT (UZBEKISTAN)**



**NUR-SULTAN (KAZAKHSTAN)**



**DUSHANBE (TAJIKISTAN)**





# SHENZHEN LMSU-BIT UNIVERSITY



**2014** - Memorandum of establishment  
**2017** - Start of education process

## **BACHELOR'S PROGRAMS:**

- Russian Language and Literature
- Mathematical Modeling and Information Technology
- Applied Mathematics and Computer Science
- Chemistry, Physics and Mechanics of Materials
- Economics
- Biology

## **MASTER'S PROGRAMS:**

- Russian Language and Culture in the Modern World
- Theory and Methodology of Teaching Russian as a Foreign language
- Nanobiotechnology
- Global Change Ecology and NOVEL Ecosystems (ecOne)
- Urban Ecology and Regional planning

## **POSTGRADUATE PROGRAMS:**

- Biological Sciences
- Linguistics and Literary Studies



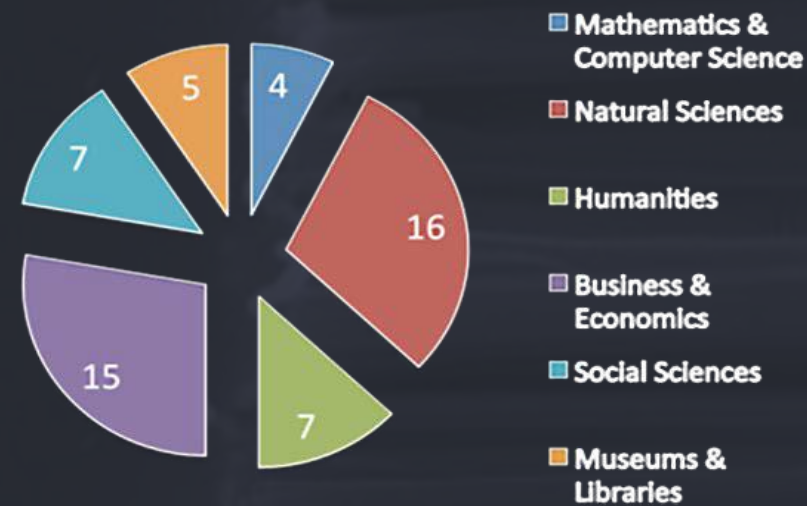
Lomonosov  
Moscow  
State  
University

[www.msu.ru](http://www.msu.ru)

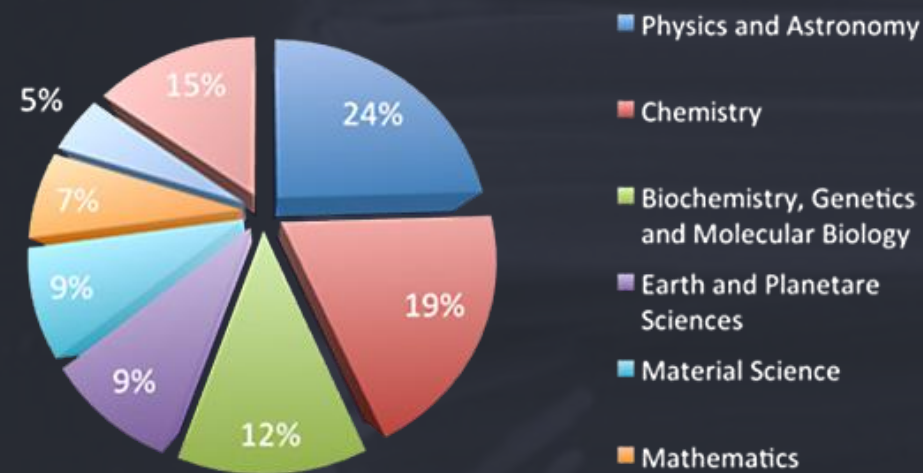


# RESEARCH AT MSU

Divisions



Publications in various areas



## KEY RESEARCH PRIORITIES:

- Fundamental and applied issues of space studies
- Brain research, cognitive systems, artificial intelligence
- Molecular technologies of living systems and synthetic biology
- Mathematical methods for the analysis of complex systems
- Photonic and quantum technologies
- Digital medicine
- Future of the planet and global environmental changes
- Preservation of world historical and cultural heritage





# MSU SUPERCOMPUTERS

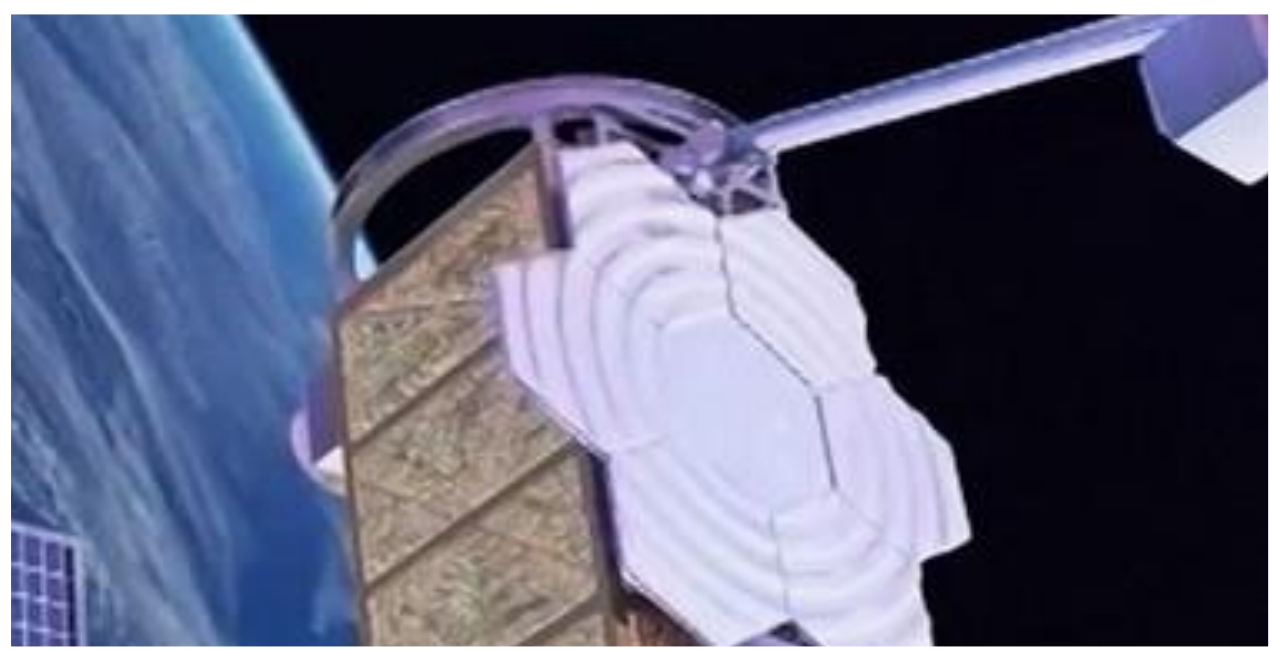


- **Moscow State University supercomputers:**
  - **Lomonosov-1** – capable of **1.7 petaflops**
  - **Lomonosov-2** – capable of **3 petaflops**
- **Ranked 130<sup>th</sup> in the Top 500 list of the world's most powerful computers (June 2020)**
- **Support more than 600 research groups at MSU**





# MSU SPACE STUDIES



- MSU research and educational space satellites:
  - Tatiana-1 (2005)
  - Tatiana-2 (2009)
  - Lomonosov (2016)
- The space research program is aimed at studying extremely high energy cosmic rays and rapidly moving processes in the optical, X-ray and gamma ranges of wavelengths that arise in the upper atmosphere of the Earth and the Universe.
- The goal is to solve theoretical and applied problems and teach students to work with real-time space data.





# «NOAH'S ARK PROJECT»

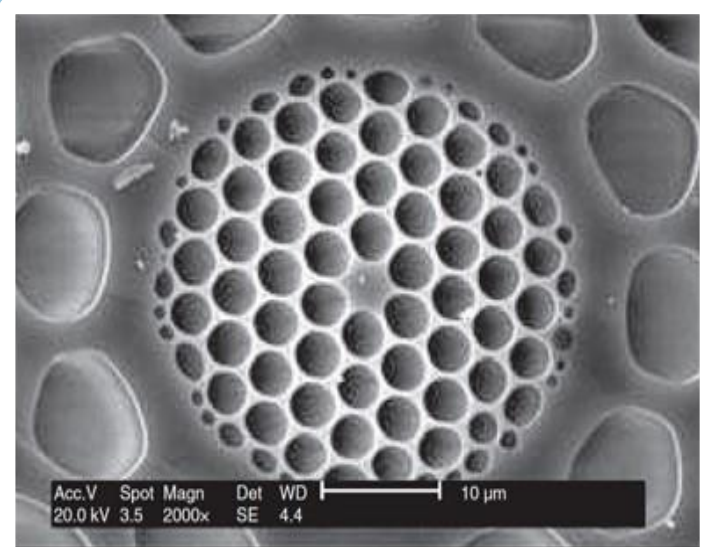


- A national depository of living systems:
  - 786,000 samples in Virtual Herbarium;
  - 12,000 samples of microorganisms, fungi, plant cells etc.
- The depository's main purpose is to preserve the biodiversity of our planet and create new ways of using biological material.





# INNOVATION INFRASTRUCTURE



- MSU research-technological valley with following clusters:
  - Biomedical Nanotechnology and New Materials
  - Mathematical Modelling and High Performance Computing
  - Robotics, Engineering, Energy technology and Efficient Energy Storage
  - Space Research
  - Earth Sciences and Environmental Projects
  - Interdisciplinary Social Projects and Cognitive Sciences
- Science Park
- Student Business Incubator
- Biotechnology Incubator





# LOMONOSOV INTERNATIONAL YOUTH SCIENCE FORUM



**500,000+ talented young people from 80+ countries** took part in the Forum for the 25-year period of its work.



**The International Union of Young Scientists** was created as the result of the activities of “Lomonosov” Forum – the largest youth science congress.





# FESTIVAL OF SCIENCE



## HOSTED BY MSU EVERY YEAR

- Motto: **Feel the Science!**
- **1,000,000+** visitors in 2020
- Lectures by leading scientists and Nobel laureates
- Interactive workshops, demonstrations and exhibitions showcasing the latest scientific advances and cutting-edge technological developments.





# MSU INTERNATIONAL COOPERATION

- **700+** partner universities and research centers
- in **60+** countries
- on **5** continents
- **500+** foreign students are annually coming to MSU on exchange programs

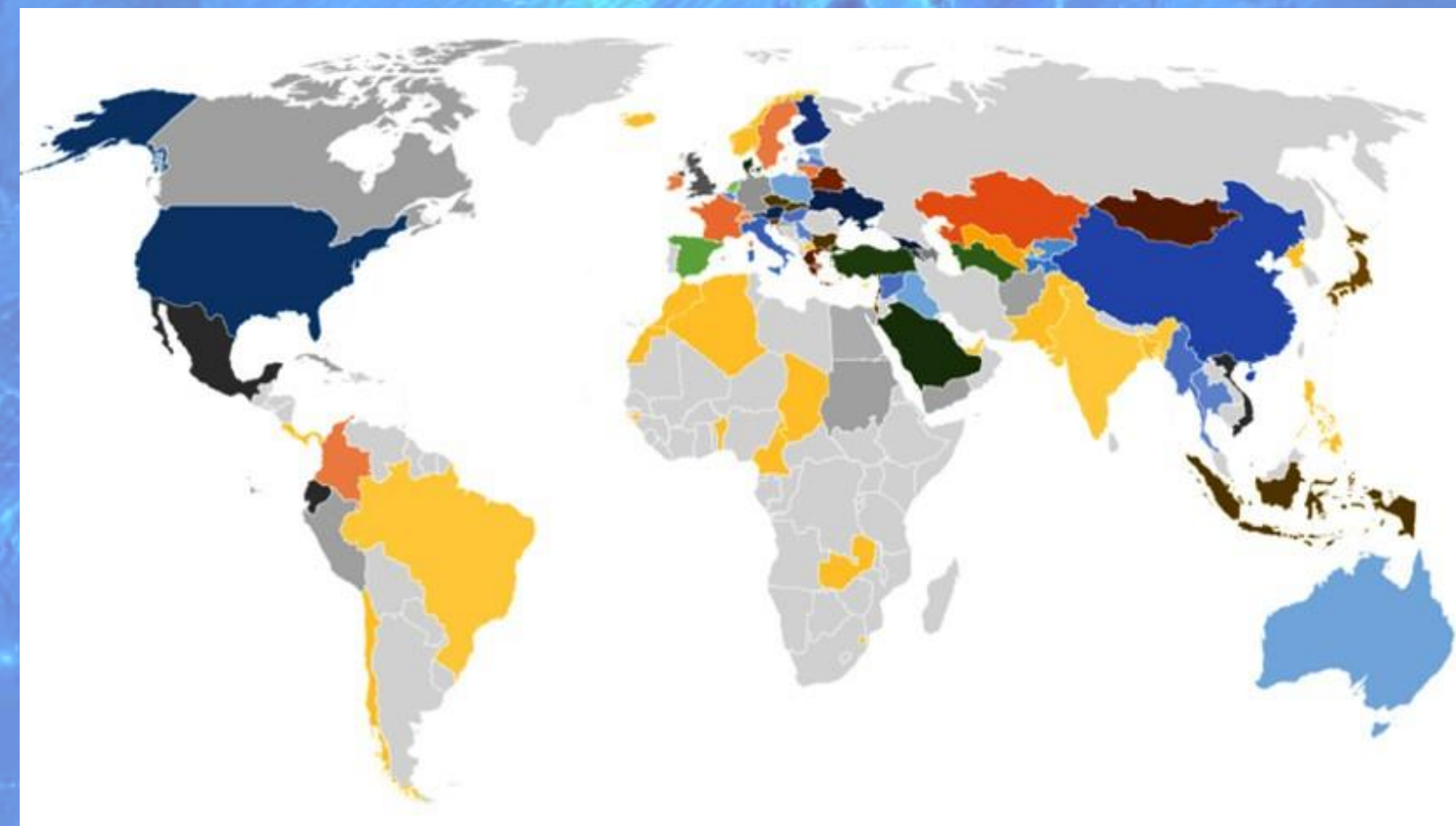
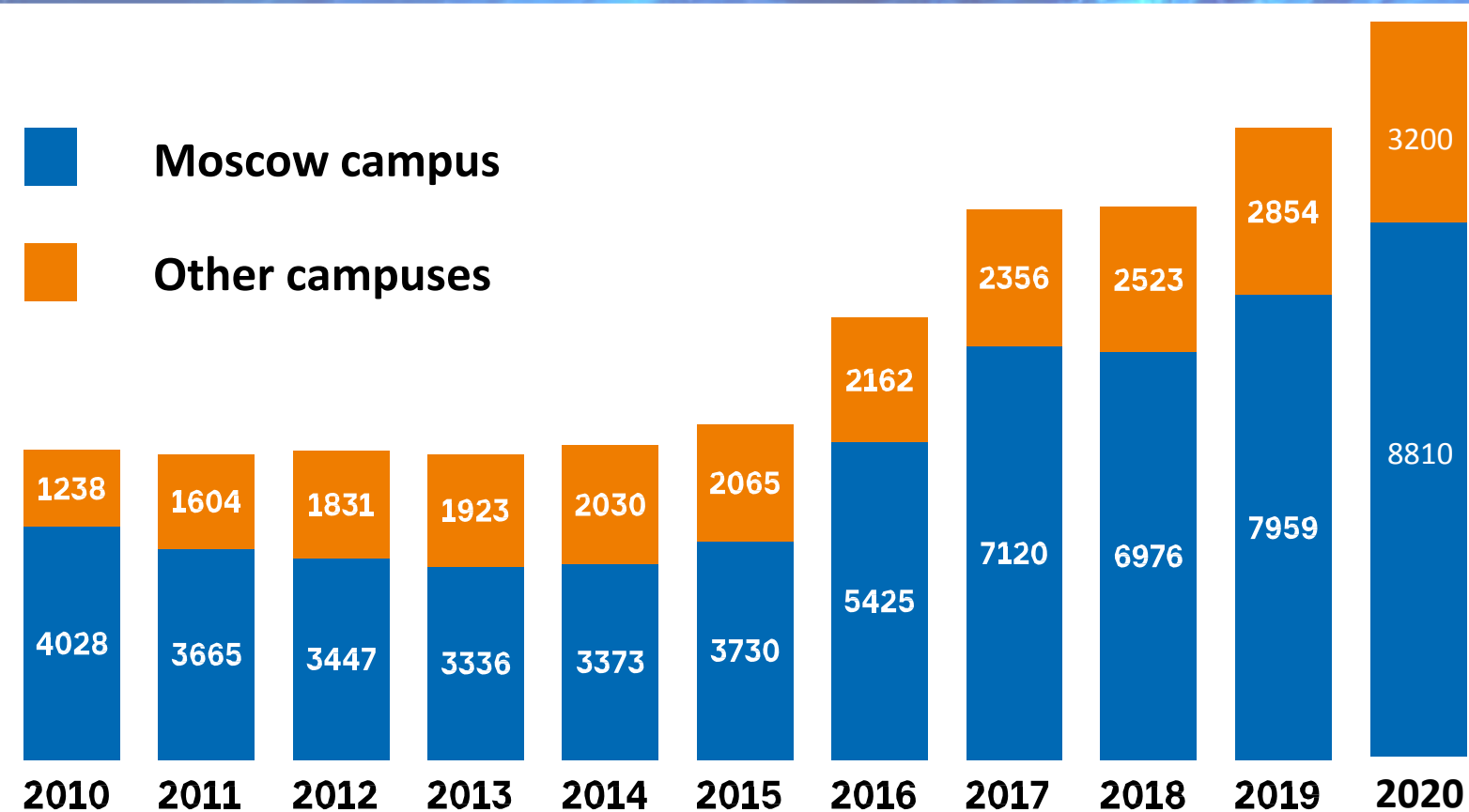




# INTERNATIONAL STUDENTS AT MSU

**10,000+** international students from **50+** countries

In 2020, about **2,000** newcoming students were enrolled at MSU





# INTERNATIONAL RECTORS' FORUMS

In 2019-20, the RUSSIAN RECTOR'S UNION and MSU acted as organizers of **9 International Rectors' Forums** held in Russia and abroad.





# UNIVERSITY GLOBAL PARTNERSHIPS



- Russian-Chinese Top University Association
- Russian-Japanese University Association
- Russian-Indian University Association
- Russian-Iranian Top University Association
- Russian-Cuban University Association
- Federation of Russian and Arabic Presidents





# MSU SPORTS FACILITIES

More than 100 buildings and sports facilities, including:

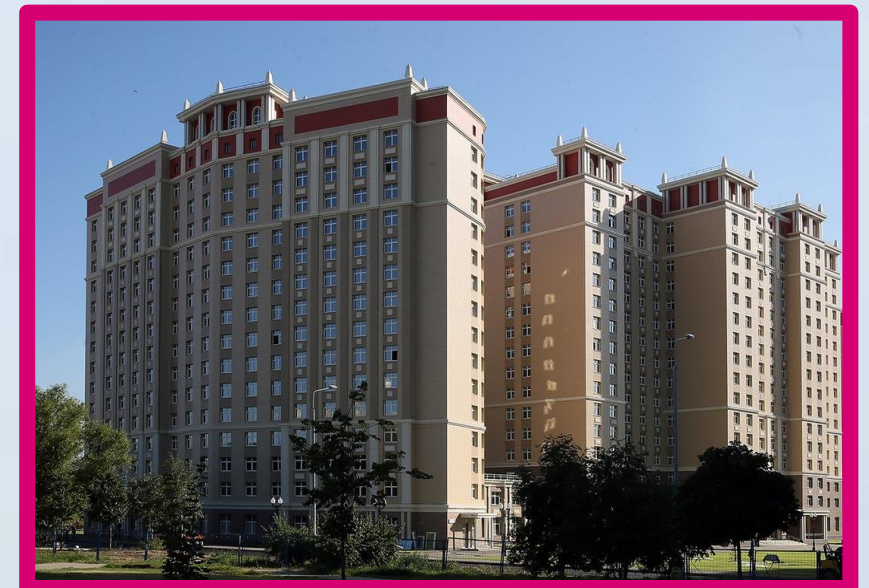
- MSU stadium
- Athletics arena
- Football fields
- Swimming pool (25 m)
- Gyms
- Tennis courts





# MSU DORMITORIES

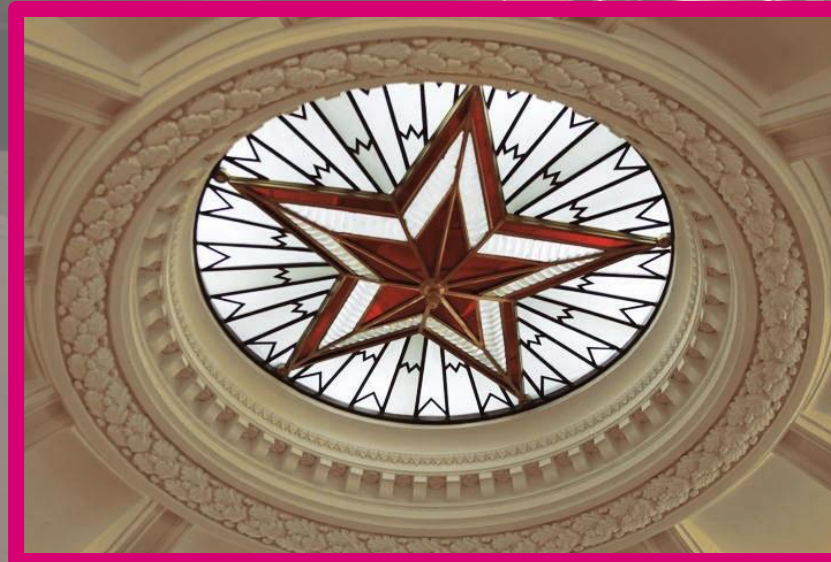
- Student residence hall in the MSU Main building
- Residence hall for postgraduate students and trainee
- Student residence hall on Lomonosovsky Prospect
- Student residence hall on Vernadsky Avenue
- Affiliate of the student residence hall
- Student residence hall at Kravchenko Street
- Student residence hall in Yasenevo





# MSU SCIENCE MUSEUMS

- **MSU EARTH SCIENCE MUSEUM:** **10,000 +** exhibits on **300+** stands covering all aspects of geology, paleontology, physical geography, soil science and ecology.
- **MSU ANTHROPOLOGY MUSEUM:** **one of the largest** archeological and ethnographic exhibits collections in the world
- **MSU ZOOLOGICAL MUSEUM:** more than **4,500,000** individual artifacts, **3,000,000** of which are insect samples.
- **MSU HISTORY MUSEUM:** **3,500+** exhibits and **10,000+** photo materials covering different periods of MSU history





# MSU BOTANIC GARDENS

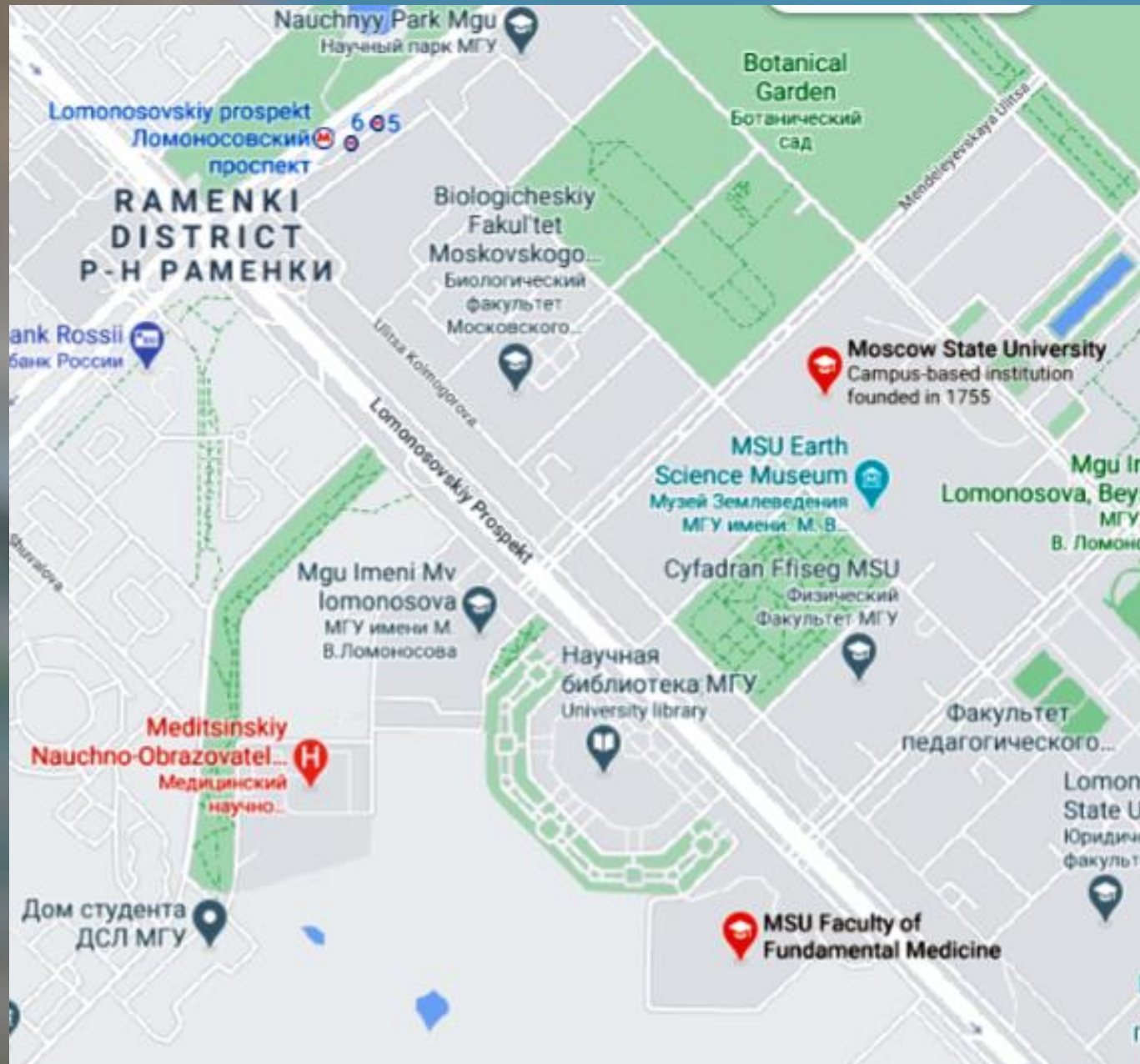
**“Apothecary Garden”** (est. in 1706) – Russia’s oldest botanical garden, and the most cared-for, photogenic, accessible and informative one in Moscow.

**MSU Faculty of Biology Botanic Garden** (est. 1950) – beautiful garden located at Vorobyevy Gory campus, with over 5,000 species of plants.





# CONTACTS



Lomonosov Moscow State University  
Leninskie Gory 1  
Moscow 119991,  
Russian Federation

<https://www.msu.ru/en/>

E-mail: [international@rector.msu.ru](mailto:international@rector.msu.ru)

Tel. + 7 (495) 939-22-64



Lomonosov  
Moscow  
State  
University

[www.msu.ru](http://www.msu.ru)